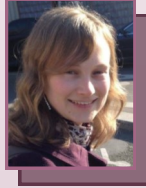


# Ecclesfield Group Practice

## Staff News

### Dr Alice Howlett

Dr Howlett has been in Sheffield for 10 years now and loves getting out into the peaks, whatever the weather! She is a keen gardener and sings in a local community choir. At work her interests involve medical education and palliative care.

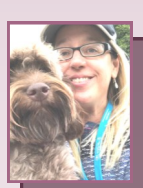
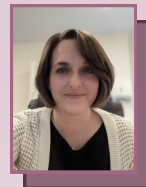


### Dr Ted Turner

Dr Turner is an experienced GP who has spent most of his working life in North Sheffield. He enjoys running, computer games and craft beer in moderation of course.

### Dr Naomi Kaufman

Dr Kaufman qualified from Leicester Medical School in 2011 and has lived and worked around Sheffield since then. During her spare time she enjoys spending time with her children, cooking for friends and family and listening to music.



### Dr Joanne Hazel

Jo Hazell is a very experienced GP who lives in Sheffield with her husband and children. In her spare time Jo enjoys reading and walking her dogs, she also enjoys spending time with her family. Her special interest are paediatrics, gynae and general surgery.

NOVEMBER 2020

[www.ecclesfieldgp.co.uk](http://www.ecclesfieldgp.co.uk)

## We are open!



Due to the coronavirus outbreak, how you contact us will be different at the moment. This is to limit face-to-face contact whenever possible and help stop the spread of coronavirus.

If you require a GP or clinical advice call the surgery to discuss a face-to-face or virtual (telephone or video) appointment.

You can also call NHS 111. Please do not come to the surgery unless you have an appointment.

GPs are working hard to provide care safely.

Please follow our practice safety advice if visiting for an appointment.

**Do not come to the surgery if you have symptoms or coronavirus or are self-isolating.**

If appropriate, you will receive advice or care via video or over the phone. **#HelpUsHelpYou**

## Flu Clinics

We are now approaching the flu season and appointments are available for all at risk patients and over 65's. We are adhering to the government rules regarding Covid-19 and a safe working environment. We want to protect you, so please be kind and patient to staff and other patients when attending surgery. We are asking you to

- ◇ Arrive on time, no earlier for your appointment as we are limited to the amount of patients who can enter the building. **Please attend alone if possible.**
- ◇ Wear a face covering at all times, unless exempt.
- ◇ Come in appropriate clothing, waterproof if you need to wait outside the building and loose clothing for easy access whilst having your vaccination.
- ◇ Read the notice board outside that gives further instructions.
- ◇ Do not enter the building if you have any Covid symptoms.

The appointment allocated to you is just 5 minutes, so the time you have to spend in surgery will pass quickly and you will leave protected from the flu virus this season.

Thank you for your ongoing support, the doctors and staff really appreciate this.

[www.iwantgreatcare.org](http://www.iwantgreatcare.org)

## Physiotherapy

We now have an extra new service available through the practice.

Physiotherapy telephone assessments are available daily Monday to Friday.

When you contact the surgery your name can be added to the daily list for the initial assessment, but please note, this will be a telephone conversation and not a face to face appointment.

## **Video Consultations:**

Coronavirus update on GP/Nurse appointments – our surgery is open and it is important you contact us to get help if you need it.

We have made changes to our GP/Nurse appointments due to coronavirus to keep our patients and staff safe.

In the first instance your appointment will be a telephone consultation with the GP/Nurse. Do not come to the surgery in person. Where clinically necessary the GP/Nurse will then arrange a face to face consultation with you. This can be using the video option on your smartphone, tablet or computer. You may be asked if able to supply photographs where needed. A physical face to face appointment will be arranged where is clinically necessary.

Only visit the surgery if advised to by a clinician. Please attend with a face covering. Please visit our website for all up-to-date information regarding booking appointments either over the telephone or online.

## **Attendance; Appointment statistics:**

These past few months have completely changed our lives but our GPs, Nurses, Reception and Admin teams continue to provide the most effective healthcare possible for NHS patients.

Our reception team have taken over **24,000** calls; this has generated over **20,000** telephone appointments including video consultations for both our GPs and Nurse Practitioners. With **7,500** face to face appointments in the surgery, with a further, **450** patients visited in their home setting.



## **Useful Numbers**

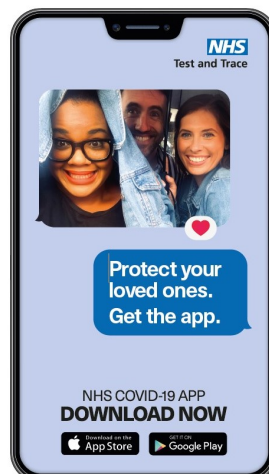
Northern General Hospital	(0114) 243 4343
Royal Hallamshire Hospital	(0114) 271 1900
Sheffield Children's Hospital	(0114) 271 7000
Weston Park Hospital	(0114) 226 5000
Charles Clifford Dental Hospital	(0114) 271 7800

## **Pharmacies**

Lloyds Pharmacy (Mill Road)	(0114) 246 9383
Lloyds Pharmacy (Margetson)	(0114) 232 1741
Lloyds Pharmacy (High Green)	(0114) 284 8219
Lloyds Pharmacy (Firth Park)	(0114) 243 8533
Asda Pharmacy (Chaucer Road)	(0114) 294 4250
Asda Pharmacy (Chapelton)	(0114) 246 1146
The Wicker Pharmacy (Wicker)	(0114) 272 7676
Boots (Meadowhall)	(0114) 256 8011
Co-op Pharmacy (Thorpe Hesley)	(0114) 257 1557
LO Pharmacy (Chapelton)	(0114) 246 7320
Morrison's Pharmacy (Ecclesfield)	(0114) 246 6874
Rowlands Pharmacy (Bevan Way)	(0114) 246 2636
Well Pharmacy (Grenoside)	(0114) 245 0021
Seven Hills (Wincobank)	(0114) 242 5785
Pharmacy to U (Patient Line)	(0113) 265 02 22

## Face Coverings

Thank you to all our patients for following guidance and wearing a face mask when visiting the surgery. As government guidance continues to change through the tiering system we have also asked our non-clinical staff to wear a mask when moving around the building in communal spaces to protect each other at this time.



## **Ecclesfield Group Practice The Health Centre**

96a Mill Road,  
Ecclesfield,  
Sheffield S35 9XQ  
Tel: 0114 2469030

[SHECCG.EcclesfieldGP@nhs.net](mailto:SHECCG.EcclesfieldGP@nhs.net)

## **Margetson Surgery**

(Branch site)  
1 Remington Avenue,  
Parson Cross,  
Sheffield S5 9PA  
(Same number as above)